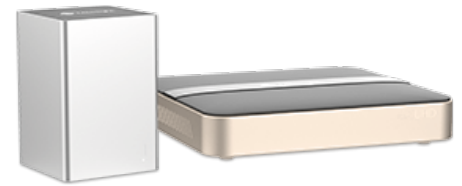


# Network Video Recorder

## 4K Ultra HD Compact NVR

Configured for use with Lasermet PTZ Dome Network Camera and Network Keyboard

- Full HD 1080P & 4K supported
- Full HD 1080P resolution recording & playback
- H.265+H.264 compression
- Up to 10TB storage capacity
- Dual stream recording support
- HDMI, USB, and LAN ports
- Mobile connection
- P2P technology

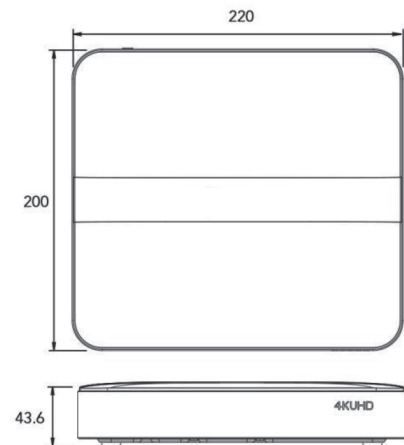


### Specifications

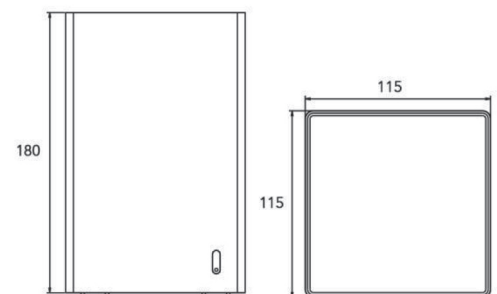
Video/Audio Inputs	4 Channel (40Mbps) 9 Channel (90Mbps)
Video/Audio Outputs	1 Channel HDMI dual stream supported
Recording Resolution	8MP / 6MP / 5MP / 4MP / 3MP / 1080p / 720p / UXGA / D1 / VGA / CIF / QCIF
Video Compression	H.265 / H.265 (HEVC) / H.264
Storage	1 SATA HDD (3.5")
Maximum Capacity	10TB (each HDD)
Recording Modes	Continuous, Motion Detection Smart Event, Event
Network Protocol	IPv4/IPv6, TCP, UDP, RTP, RTSP, RTCP, HTTP, HTTPS, DNS, DDNS, DHCP, NTP, SNTP, SMTP, SNMP, UPnP, NFS
External Interface	RJ45 / USB
Advanced Functions	ANR
Power Supply	12VDC, 2A
Consumption	4CH: ≤2.3W(without HDD) 9CH: ≤5W(without HDD)
Operating Conditions	-10°C - 55°C 10-90% humidity
Weight	4CH: 0.19kg 9CH: 1.10kg

All specifications are subject to change without notice. All network specifications and recording times are based on theoretical situations. Actual performances will vary depending on external factors. No liability will be accepted by Lasermet for any errors or omissions in this information.

4-Channel Version  
(dimensions in mm)



9-Channel Version  
(dimensions in mm)



**lasermet**  
laser safety solutions\*

# Network Video Recorder

## Wiring Instructions to PTZ Camera

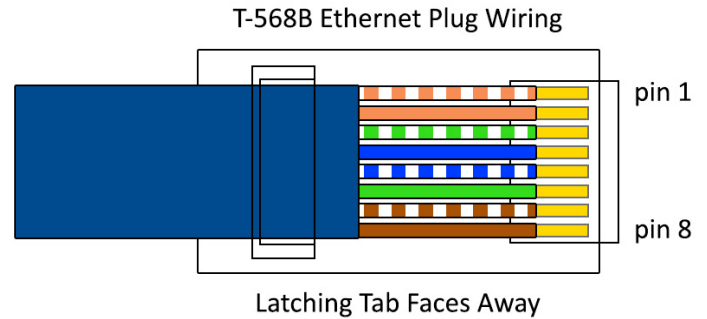
Use a network cable (Cat5E or Cat 6) of a type to suit the environment, with an RJ45 plug terminated as shown.

### Option 1

PoE connection recommend distance is 60m (100m max) depending on the PTZ motor power consumption.

### Option 2

The camera can be connected via a PoE source ( or powered by a 12VDC source). When connected to the same network via LAN port, the NVR can locate the camera using its IP Address and can fully control it without a direct connection.



## Wiring Instructions to Network Keyboard

### Option 1

Connect NVR and Keyboard to the main network via Cat5E or Cat 6 cabling.

### Option 2

Connect directly from LAN ports on each device.

## Interfaces

1. USB
2. HDMI
3. LAN
4. Power
5. Reset
6. Power Button



**lasernet**  
laser safety solutions\*