

Services

Laser Protection Advisor (LPA) Support

In Hospitals in the UK operating theatres and other departments using lasers are required to have Laser Protection Supervisors (LPS) and Laser Protection Advisers (LPA). The LPS should be someone within the local staff who is responsible for the application of the local rules on a day to day basis, but who does not necessarily have an in depth knowledge of the subject. Therefore the LPS must have an LPA (a person knowledgeable in laser safety) to whom they can refer for technical advice. The Laser Protection Advisor will normally be from outside the department where the lasers are used. The LPA will write the local rules, specify eyewear and other safety equipment, be available for specialist advice and occasionally visit the department to review the laser safety.



Lasermet Medical Laser Protection Advisers are certificated by the Association of Laser Safety Professionals and offer expert advice based on years of experience.

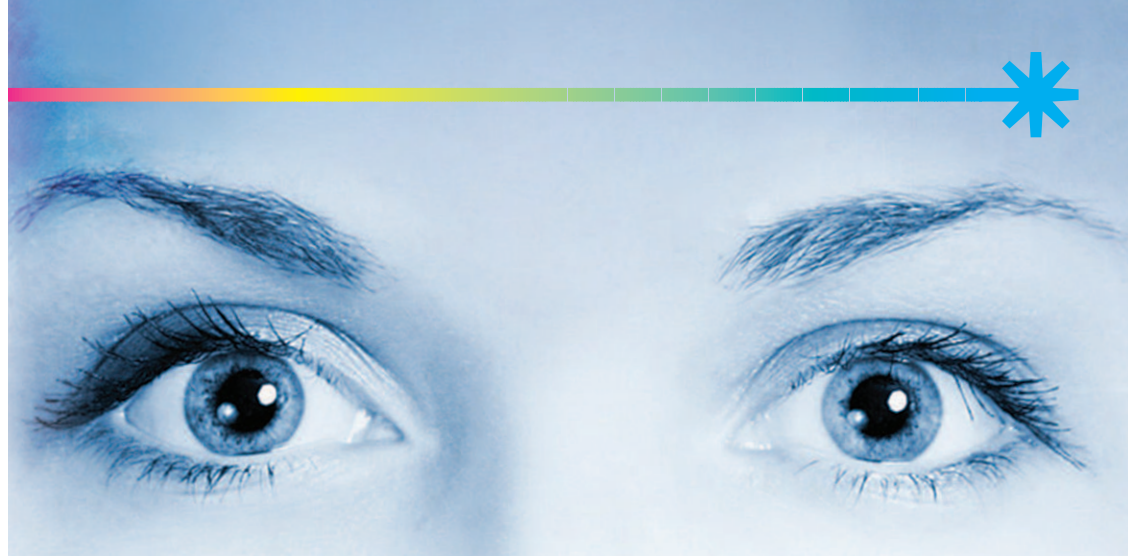
Laser Safety Training

Practitioners and theatre staff using lasers are required to have received basic training in the safety of lasers.

All persons using Class 1M, Class 2M, Class 3R, Class 3B and Class 4 lasers should receive laser safety training. For Class 1M, 2M and 3R lasers this training may be quite concise. In addition all organisations using Class 3B, Class 4 or Invisible Class 3R lasers must have a Laser Safety Officer who should have received appropriate training. Lasermet provide this training.

Core of Knowledge Training

This course is intended for operators and other staff in Clinics using Lasers & Intense Pulsed Light systems for hair removal, skin toning, dentistry, tattoo removal and other similar procedures. It is designed both to provide a grounding in the basics of the safe use of lasers & IPL systems, and to satisfy the training requirements MHRA Device Bulletin DB2008(03) "Guidance on the safe use of lasers, intense light source systems and LEDs in medical, surgical, dental and aesthetic practices".



Lasermet

Medical Laser Safety

**The one stop shop for all your
medical laser safety needs**

- Laser Safety Equipment
- Laser Safety Training, Audits and Consultancy

Visit Lasermet at **www.lasermet.com**

Visit Lasermet Regulatory Solutions at
www.lasermet-rs.com

About Lasermet

Leaders in Laser Safety

Lasermet are leaders in laser safety having been operating in this field for over 20 years, working with clients to resolve their laser safety issues as quickly and professionally as possible. During this time we have been involved at the heart of laser safety standards making at National, European and International levels, where we have been instrumental in the development of the IEC / EN 60825- 1, IEC / EN 60825-2 and the rest of the 60825 series of standards which deal with the safety of laser products. Consequently we are able to offer laser safety consultancy and training of the highest quality. Lasermet has been working with clients from sole traders to blue chip companies, universities and government institutions since 1987.



now able to offer an extensive range of laser safety products and services throughout the medical world.

This brochure is designed to provide you with an overview of Lasermet's products and services for the medical environment. Detailed specifications of all products and services are available on separate brochures.

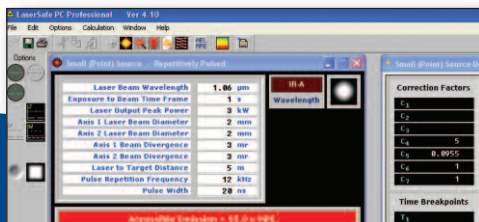
Lasermet Regulatory Solutions (a division of Lasermet) was set up in 2005 to provide Laser Protection Adviser (LPA) and Expert Medical Practitioner (EMP) support and assistance with Healthcare Commission registration to beauty therapists, cosmetic doctors and dentists using lasers. Consequently, Lasermet has gained a great deal of expertise within the medical industry and is

Laser Safety Software

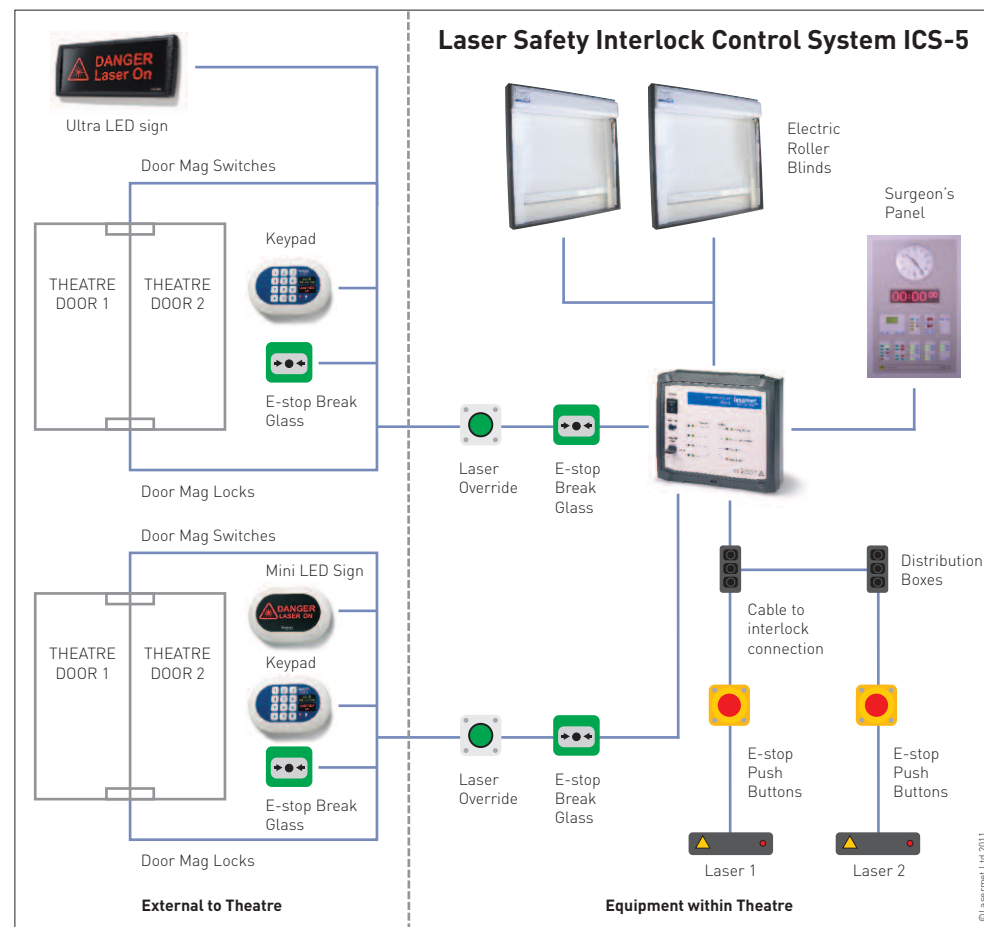
LaserSafe PC

Produced by GL Services in association with Lasermet Ltd, this is an ideal package for Laser Safety Officers or anyone else who regularly performs risk assessments on lasers. Conforming to all the relevant standards, it will save you hours of work and give consistent and correct answers to your calculations of MPEs, AELs, accessible emission, optical density requirements, classification etc.

Because it performs calculations in seconds — that used to take hours — you can easily explore the safety of different scenarios for your laser or laser system. LaserSafe PC is by far the most comprehensive and widely used laser safety software available, with extensive use by major companies, government institutions hospitals and Universities.



Interlock Control Systems



Protection and Guarding

Eyewear for Personal Protection

Lasermet provides an extensive range of eyewear from a range of suppliers to suit all laser safety applications. This includes laser protective eyewear, laser alignment eyewear, IPL eyewear and patient eyewear. Calculations of the appropriate eyewear and filter windows specifications are completed using Lasersafe PC software.

Protective Eyewear

Lasermet has one of the largest selections of laser goggles available anywhere in Europe with over one hundred different filters and more than twenty frame styles to choose from. Browse through our online catalogue to find what you need, use our search facility on the laser protective eyewear page, or contact our sales department for advice.

Conformity

This protective eyewear conforms with the European PPE Directive under standard EN 207.



Laser Protective Eyewear

Vast selection of laser goggles and spectacles designed for maximum protection.

Laser Alignment Eyewear

Protects the eyes while allowing viewing of beam position.

IPL Eyewear

Protective eyewear for Intense Pulsed Light (IPL) Systems commonly used for hair removal and cosmetic applications.

Patient Eyewear

Options for protection of the patient from laser & IPL radiation, allowing maximum access to the face for treatment purposes.



Screens

Designed for use as passive guards to enclose an area where Class 3B or Class 4 lasers are in use the laser blocking screens are CE marked and certified to EN 60825-4.



Protection and Guarding

Roller Blinds

Laser Blocking Roller Blinds for Theatre Windows

Made-to-measure to fit any size of window, the Lasermet laser blocking roller blinds are available in standard or encapsulated variants and can be supplied for either surface or recessed mounting. The maximum size for standard encapsulated laser blocking roller blinds is 3.5m drop x 3.5m width.

Encapsulated Laser Blocking Roller Blinds

Encapsulated laser safety roller blinds are made using Lasermet's laser blocking material which has a silicone rubber coating (no latex). The roller blind is built into a white finish aluminium frame, which encapsulates the top, both edges and bottom of the blind. This eliminates any possibility of laser beams passing round the sides of the blind, blocks out all light and gives a much neater finish. All roller blinds are made to measure and are CE marked and certified to EN 60825-4 'Safety of Laser Products Part 4 - Laser Guards'.

Standard Laser Blocking Roller Blinds

Standard laser blocking roller blinds are also available for Operating Theatre Windows and windows in doors in Operating Theatres. The silicone rubber coating (no latex) blocks laser

beams of all wavelengths and covers all fabric, creating a hygienically sealed material suitable for use in Operating Theatres. All roller blinds are CE marked and certified to EN 60825-4 'Safety of Laser Products Part 4 - Laser Guards'. The roller blinds are made to measure to fit any size of window. For non-recessed windows it is best to allow an extra 100 mm on the height and width, giving an extra 50 mm all round to stop any laser beams passing through the window.



Encapsulated Laser Blocking Roller Blind with crank handle



Standard Laser Blocking Roller Blind - chain operated



Encapsulated Laser Blocking Roller Blind - chain operated

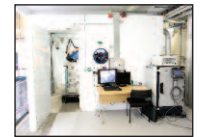
Curtains

Laser Blocking Curtains are made from Lasermet's specially developed laser blocking material and can be supplied ready made as ceiling or wall mounted curtains - one side being black and one side white.



Large Enclosures

Lasermet supplies and installs Class 1 room size laser enclosures for high power lasers. All enclosures are tested and certified to EN 60825-4 (Safety of Laser Products Part 4 - Laser Guards). These can be supplied complete with an interlock system and illuminated laser warning signs.



Safety Control Systems



Access Control Keypad with LED Messaging

The ICS-KP12 is an access control keypad designed for use with Lasermet's interlock controller, or as a stand alone unit for control of maglocks or door strikes.

The attractive wall mount design makes it particularly suitable for newly built or refurbished laboratories, hospitals or doctors surgeries.

There are two independent relays each with common, normally open and normally closed contacts. Operating time for each relay can be set independently of the other relay to between 0 and 30 seconds. Relays can be triggered either by entering the correct code or by use of the remote trigger input.

ICS-5 laser safety interlock controller

Lasermet Interlock Control Systems enable organisations to comply with best practice when providing laser users with a safe environment in which to operate hazardous lasers. They are configured to provide automatic shut-off of the laser beam if safety doors, covers or blinds are opened.

All Lasermet Interlock Systems meet the relevant European Standards - in particular EN 13849-1 (Category 3), EN61508 (SIL4); EN61010 and EN 60947-1. They also conform to the Machinery Directive; Low Voltage Directive and EMC Directive. The ICS-5 also complies with EN954-1 & EN13849-1.

The ICS-5 is the most popular interlock control system for use in laboratories and clinics supplied with a simple, easy-to-use control panel which can be wired directly to 4 interlocks or groups of interlocks.



Warning Signs

Compact "Mini" Signs

Compact low voltage 24VDC signs are available as single or dual message in the same position using just 3.6W.

The signs are secret until illuminated and two different messages can be located in the same area but in different colours. i.e. red and green. A range of messages and symbols is available but virtually any message and symbol can be specified for any of the Mini or Ultra signs.

The compact mini sign is ideally positioned to the side of a door.



Ultra Range: High performance, highly professional LED signs



Large area "Ultra" range of High Quality Backlit LED Signs are also available as single or dual message signs (470mm or 790mm wide). They are powered by 24V DC and are ideally positioned above a door or where they can be seen from a distance.

Maintenance Free

With a lifetime in excess of 50,000 operational hours these signs are effectively maintenance free hence eliminating maintenance costs and risks.

Specifications

- Dimensions: 160 mm wide x 108 mm high x 38.5 mm deep
- Weight: 160g
- Voltage: 24 VDC
- Power Consumption: 150mA at 24VDC (3.6W)

Power Supply with Switch

For signs that are to be hand switched (rather than automatically switched) a power supply with 2 or 3 way switch is available. This wall or desk mountable unit has clear visual indication of the sign state, including an LED in the end of the switch toggle which lights up the colour of the sign. The power supply can operate up to two compact LED signs.

LED sign power supply



Slim Jim - The Thin Profile Backlit LED Sign



At just 11mm in depth, this extremely thin LED sign runs directly from 230V or 110V AC mains power with no additional power supply or transformer.

The sign is designed to fit to the same fittings as on a conventional mains backbox or distribution box so it is ideal for use by electrical contractors.

Overall dimensions	355 x 105 x 11mm
Sign dimensions	275 x 58mm

Labelling

Our range of Laser Warning labels are available to buy on-line at

www.lasermet.com

